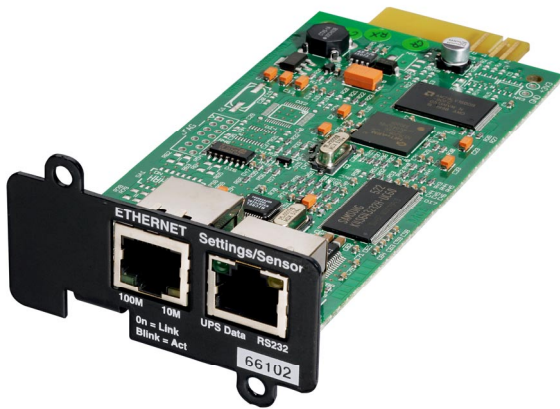


# Mupgrade Utility For Network Management Card

## User Manual



Minislot Edition 2006 (66102)



Minislot (66244)



Transverse (66074)

# Mupgrade Utility

## For Network Management Card

### User Manual

#### Table of Contents

<b>1</b>	<b>Introduction</b>	<b>3</b>
<b>2</b>	<b>Installation</b>	<b>3</b>
<b>3</b>	<b>Best environment to use it</b>	<b>3</b>
<b>4</b>	<b>Cards compatibility</b>	<b>4</b>
<b>5</b>	<b>Operations description</b>	<b>5</b>
5.1	Start and Stop Mupgrade	5
5.2	Discovering the Network Management Cards	5
5.3	Enter Username and Password	6
<b>6</b>	<b>Import and export installed UPS base</b>	<b>7</b>
<b>7</b>	<b>Upgrade the Network Management Card firmware</b>	<b>8</b>
<b>8</b>	<b>Remote Configuration</b>	<b>9</b>
8.1	Import configuration	10
8.2	The configuration editor	11
8.3	Export configuration	12
<b>9</b>	<b>Miscellaneous</b>	<b>13</b>
9.1	Icon description in the UPS list	13

# Mupgrade Utility

## For Network Management Card

### User Manual

## 1 Introduction

This document describes how to use the Network Management Card Firmware Utility software (Mupgrade) to discover, upgrade and configure Network Management Cards linked to the network.

The following functions are available:

- Auto-discovery of your installed base (Model card, IP address, MAC address, firmware card release embedded...)
- Direct link to the card Web interface.
- Firmware upgrade (single card or multicards)
- Import, modify, save, export Network Management Card configuration (single card or multicards)
- Export / import the list of the installed UPS base.

## 2 Installation

**Mupgrade** program is available from MGE Web Download area <http://www.mgeups.com/download> or on the Solution-Pac 2 CDROM.

Run the Setup.exe file and follow the instructions.

A shortcut is placed in the program menu in the group « MGE UPS SYSTEMS »

Note:

If you have UNIX or Linux platform, you cannot use this software but upgrading is possible through TFTP command. Read the Network Management Card user manual to get more information on this function.

```
# tftp <Entrer>
tftp> mode octet
tftp> verbose
tftp> put nmc_gb.bin upgrade@password@username <Entrer>
Sent 779120 bytes in 85.3 seconds [73096 bits/s]
tftp> quit <Entrer>
```

Note: TFTP upgrade is only working with 66244 and 66074 products.

## 3 Best environment to use it

This software utility has the best performance if it is principally used in INTRANET architecture. If used in EXTRANET, some limitations can be discovered because of firewalls existence.

Compatible with Microsoft platforms:

- ▶ Windows 98
- ▶ Windows NT
- ▶ Windows Millenium
- ▶ Windows 2000
- ▶ Windows 2003
- ▶ Windows XP

# Mupgrade Utility

## For Network Management Card

### User Manual

#### 4 Cards compatibility

MUPGRADE is compliant with following cards:

	Management Card Edition 2006 66102 ≥ BA 66103 66108	66244 ≥ FB	66074 ≥ FB	66244 < FB	66074 < FB
<b>Discovery</b>	Yes	Yes	Yes	Yes	Yes
<b>Internet link</b>	Yes	Yes	Yes	Yes	Yes
<b>Firmware upgrade</b>	No (direct Web access)	Yes	Yes	Yes	Yes
<b>Configuration management</b>	No	Yes	Yes	No	No
<b>Export / import installed base</b>	No	Yes	Yes	Yes	Yes

Note.

- XML- Web card (66073) is not compliant with Mupgrade.

# Mupgrade Utility For Network Management Card

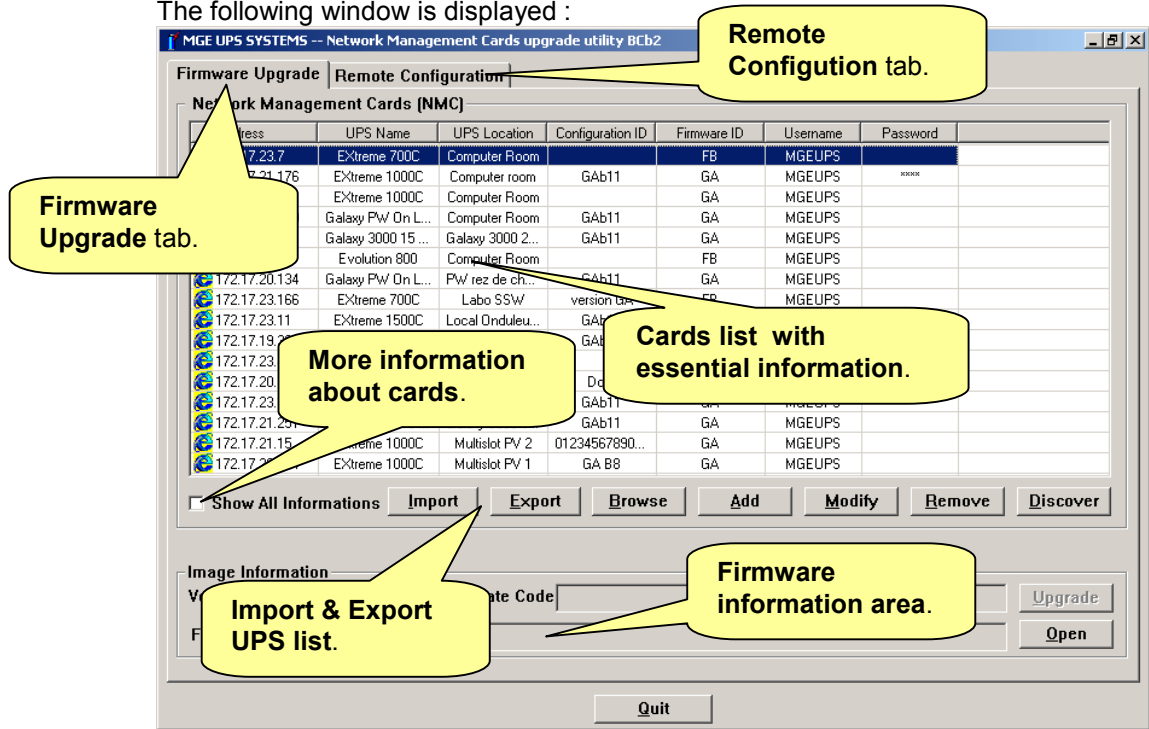
## User Manual

### 5 Operations description

#### 5.1 Start and Stop Mupgrade

Once installed, use the Mupgrade shortcut placed in the program menu to launch the software.

The following window is displayed :



Use the **Quit** button to exit the program

#### 5.2 Discovering the Network Management Cards

Autodiscovery is based on a TFTP broadcast. Access to cards which belong to another group can be limited by routers and switches configuration.

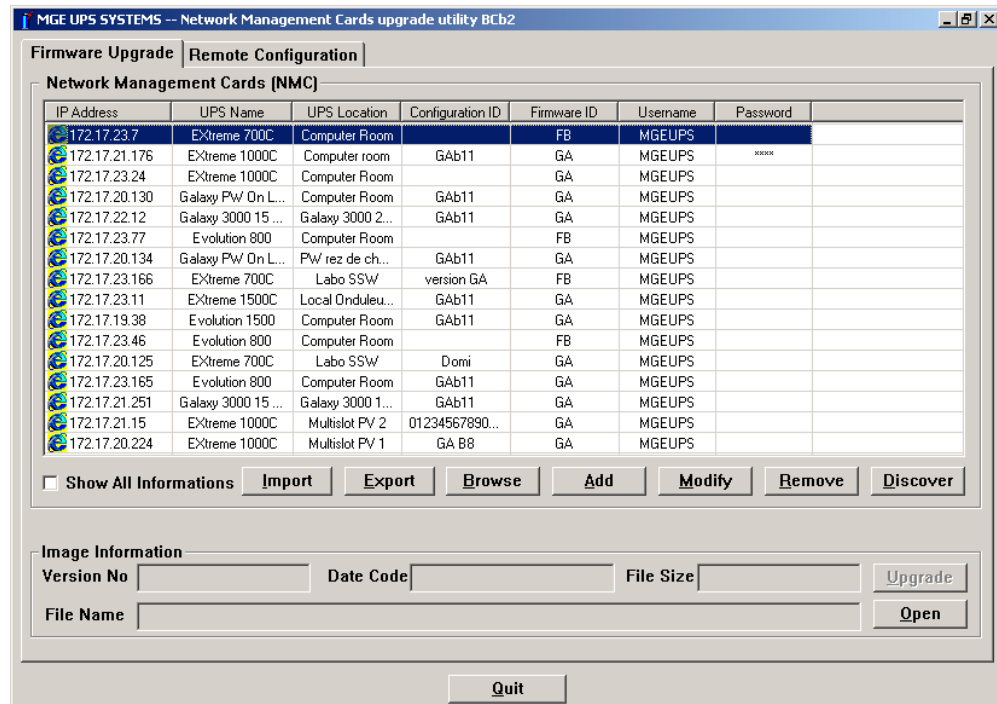
Click on the button **Discover** and wait the end of the research. To see more information about the cards select Show All Informations box. Once this research is completed all the Network Management Cards or SNMP cards connected to your WAN are displayed as follow:

# Mupgrade Utility

## For Network Management Card

### User Manual

#### - Firmware Upgrade Window -



To open a card Web interface, select a card and then click on **Browse** button.

**Add** button allows to add cards to the list for those which can not be reached with the discovery function.

**Remove** button allows to delete from the list all cards you don't want to perform any action with.

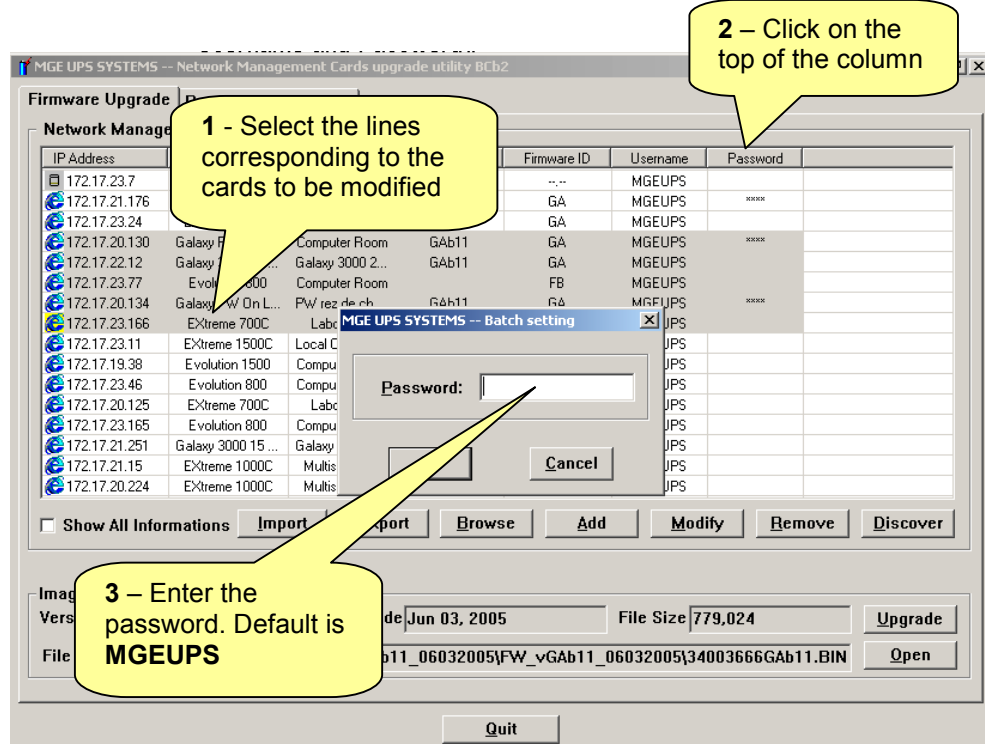
**Note:** To discover Network Management Card in factory configuration (172.17.xxx.xxx) placed in the same subnet than the PC running Mupgrade, you can change the route table of your PC in using the following command in a Command Prompt window:  
ROUTE ADD 172.17.0.0 MASK 255.255.0.0 « your PC IP »

### 5.3 Enter Username and Password

- For a single card : Select a line and click on « Modify » or double click on the line
- For several cards : Select all the cards you need by using the keys : CTRL, SHIFT, TAB, SPACE and click on the title area of the column Username and Password to enter Username and Password
- By default, Username/Password is MGEUPS/MGEUPS.

## Mupgrade Utility For Network Management Card

### User Manual



## 6 Import and export installed UPS base

**Export** Save the UPS list as a csv with all information included

**Import** button allows to load a list of IP address from a csv file, missing or uptodate information from UPSs are automatically updated.

# Mupgrade Utility For Network Management Card

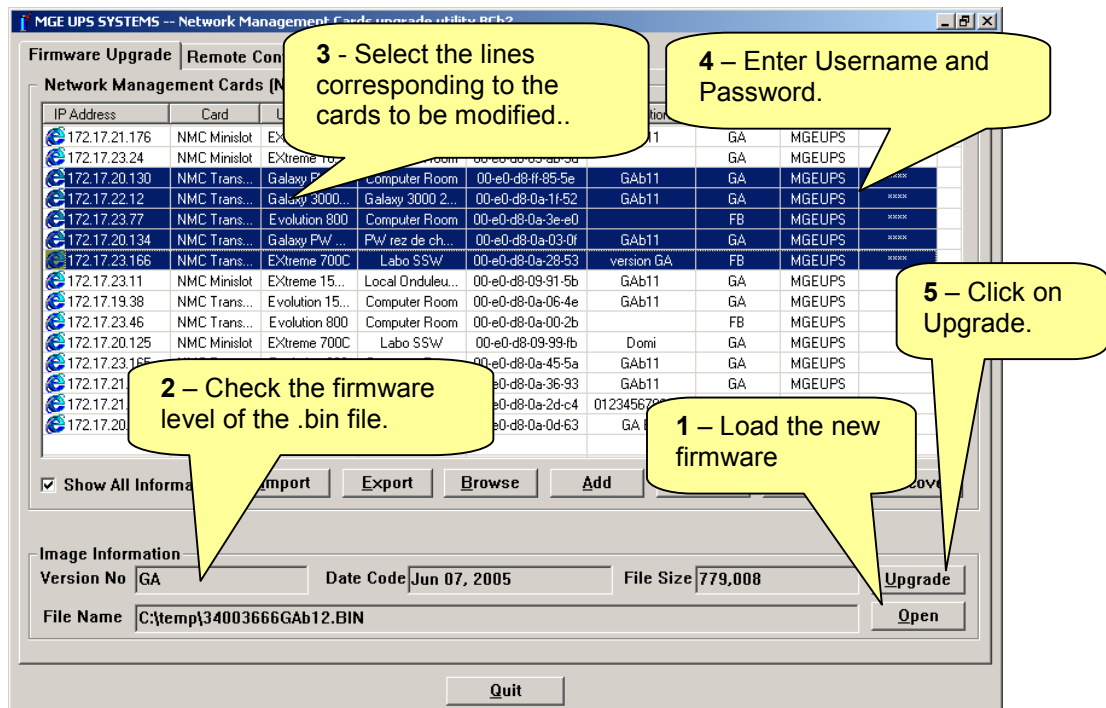
## User Manual

### 7 Upgrade the Network Management Card firmware

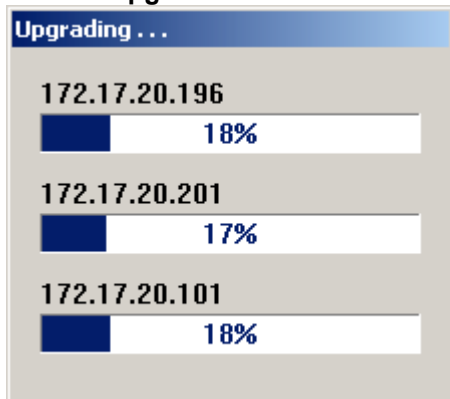
To upgrade the card firmware:

Download the last firmware release from the MGE Web site: <http://www.mgeups.com/download/>.

1. Load the new firmware file by clicking on **Open** button inside the « **Firmware Upgrade** » page.
2. Verify you have loaded the good release in the « **Version No** » window.
3. Select the card(s) you want to upgrade.
4. Check that Username and Password are filled in.



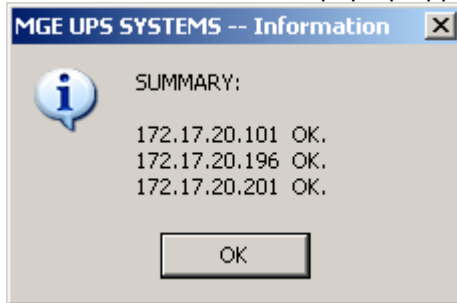
5. Click on **Upgrade** button and after on **OK** to send the new firmware to the cards.



## Mupgrade Utility For Network Management Card

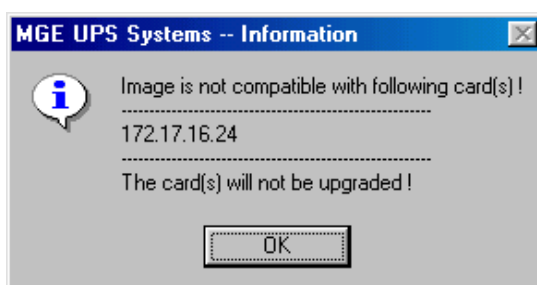
### User Manual

6. Upgrading leaves about 30 seconds / card (depend on traffic network). When it is finished, the card restarts and a similar pop-up appears :



#### Note:

1. You can select a large number of UPSs at the same time, Mupgrade will manage download operation by group of 4 UPSs.
2. Check on the firmware release note if specific operations are needed after a firmware upgrade. (Factory reset, Trap receivers subscription,..)
3. If the download operation fails for any reason, correct the problem (restart PC running Mupgrade, check network connectivity, ..) and retry a download operation **without resetting the card** during that time.
4. If the card is no more accessible after a problematic download operation, use the MsUpgrade.exe utility available from the MGE Software support
5. Firmware file for SNMP card (66245) is not compatible with Network Management Card file and vice versa.  
If you try to upgrade a card with a firmware file not compatible the following window is displayed :



## 8 Remote Configuration

The Remote configuration function allows you to import, modify and export configuration from and to Network Management Cards.

Four steps to configure all your Network Management Cards:

1. Configure a Network Management Card located on the network through the html interface to create a master configuration. Refer to the Network Management Card user manual for details.

# Mupgrade Utility

## For Network Management Card

### User Manual

2. Import this configuration from the master card.
3. Edit and change some parameters and **select the fields whose must be overwritten in the destination cards** and save the new configuration in a file.
4. Export the new configuration to other cards which have **same firmware release** than the master card

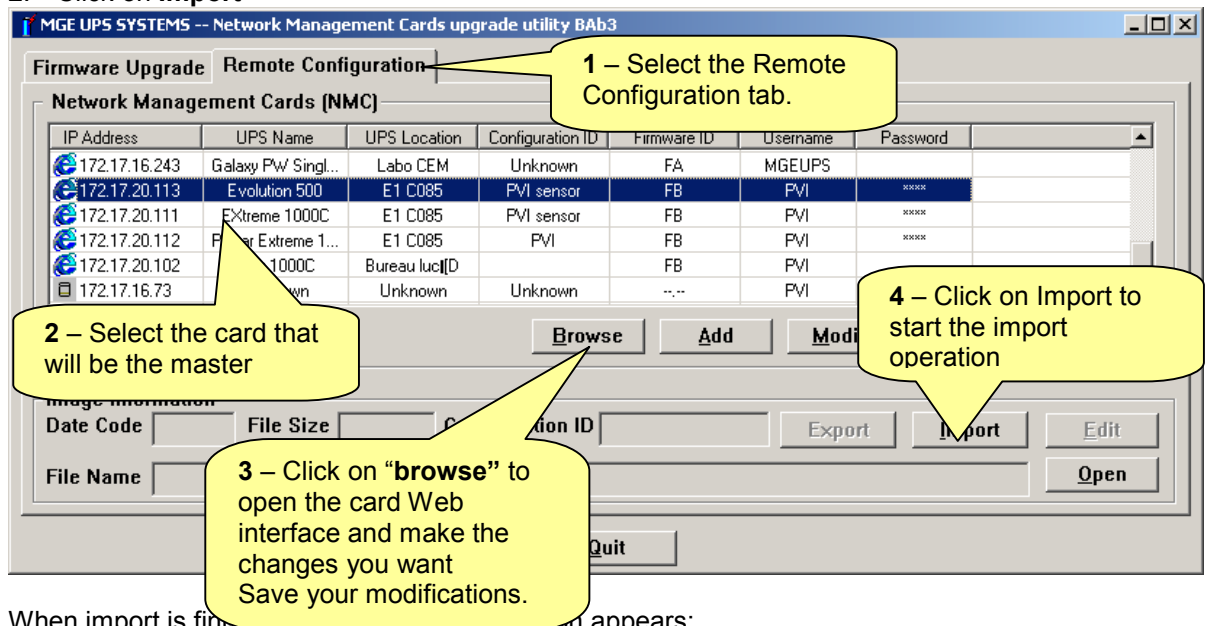
This feature is available starting card firmware release FB:

There is no compatibility limitation depending on the UPS model used or on the Network Management Card model (Transverse or Minislot). A configuration file is compatible with all the other cards which have the same firmware revision.

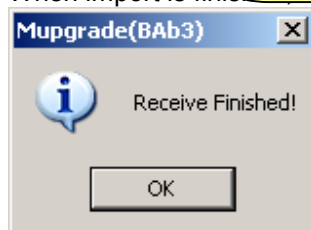
### 8.1 Import configuration

This function permit to import all the parameters managed in the Network Management Card Web interface:

1. Select one card and enter the Username and Password (see 6.2)
2. Click on **Import**



When import is finished, a dialog box appears:



# Mupgrade Utility

## For Network Management Card

### User Manual

#### 8.2 The configuration editor

At end of the import, the configuration editor opens automatically. It allows you to edit, change or mask some parameters to prepare your configuration to be exported to your installed UPS base.

The names of the items are the same than in the Network Management Card Web interface.

The following syntax is used:

- Box is not checked: the page / data will not be overwritten when exporting the file.
- Box is checked: the page / data in the uploaded card is overwritten when exporting the file.
- Indicate a page with fields separately selectable. None of the fields in the page are selected
- Indicate a page with fields separately selectable. All the fields in the page are selected.
- Indicate a page with fields separately selectable: Some of the fields in the page are selected.

Proceed as following to personalize your configuration.

1. Import a configuration from a programmed card or open an existing file.
2. Select which parameters need to be duplicated in all your cards.
3. Save your configuration and close the editor.

**RemoteConfig - Untitled.cfg**

**File**

- MGE UPS
  - Configuration ID
  - UPS Control
  - Weekly Schedule
  - Shutdown Parameters
  - Email Notification
  - Email message Settings
  - Network Settings
    - IP Address
    - Subnet Mask
    - Gateway Address
    - Hostname
    - Domain Name
    - Telnet Connection
    - BootP/DHCP
    - Network Upgrade
    - Primary DNS
    - Secondary DNS
    - SMTP Server
    - Authentication
    - Authentication User
    - Authentication Password
  - System Settings
    - Notified Applications
  - Central Shutdown Configuration
  - Access Control
  - Time
  - Environment Settings

**IP Address**

**Subnet Mask**

**Gateway**

**Hostname**

**Domain Name**

**BootP/DHCP**

**Network Upgrade**

**Primary DNS**

**Secondary DNS** 172.17.16.7

**SMTP Server** gjn123.mgeintra.com

**Authentication** Disable

MGEUPS

MGEUPS

**Callout 1:** You can attribute an identifier to the configuration. It will appear in the Mupgrade interface.

**Callout 2:** Check the box to duplicate the **Configuration ID** in all your cards.

**Callout 3:** Define all the parameters set in the **UPS Control** Web page. Change for this settings can only be done in the **UPS Control** Web page. (need to re-import configuration after)

**Callout 4:** Check the box to duplicate the **UPS Control** settings in all your cards.

**Callout 5:** All the fields of the **Network Settings** Web page can be separately selected

**Callout 6:** Check the box to duplicate the **SNMP Server** setting in all your cards.

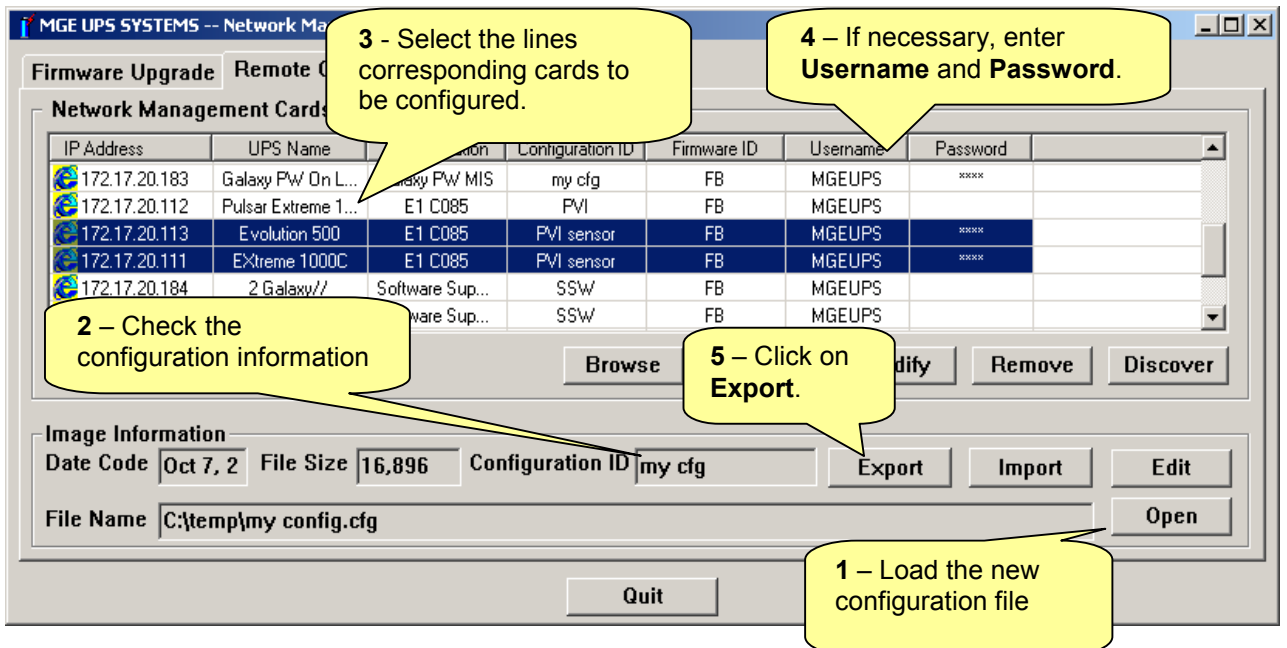
**Callout 7:** Change for this setting can be done directly in the editor

# Mupgrade Utility For Network Management Card

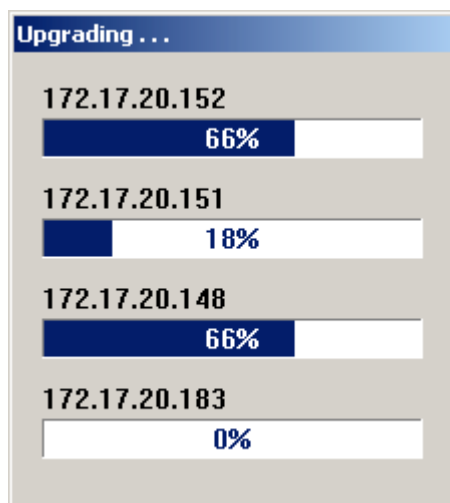
## User Manual

### 8.3 Export configuration

1. Load the configuration file by clicking on **Open** button inside the **Remote Configuration** page.
2. Verify you have loaded the good file in the **Image Information** window.
3. Select the card(s) you want to configure.
4. Check that Username and Password are filled in.



5. Click on **Export** button and after on **YES** to confirm your choice.

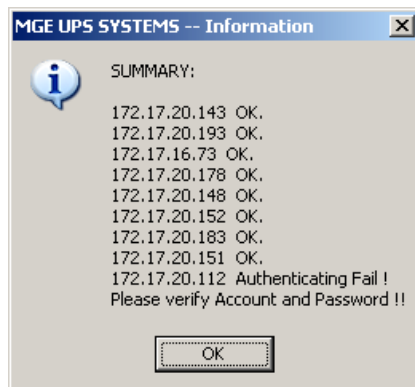


# Mupgrade Utility

## For Network Management Card

### User Manual

6. Export leaves about 5 seconds / card (depend on traffic network). When it is finished, the card restarts and a similar pop-up appears :



#### Note:

You can select a large number of UPSs at the same time, Mupgrade will manage download operation by group of 4 UPSs.

## 9 Miscellaneous

### 9.1 Icon description in the UPS list

The icon on the left part of the UPS List gives an indication of the model card and its status:

Icon	Definition
	<ul style="list-style-type: none"> <li>- Web compliant</li> <li>- The card is ready to upgrade</li> <li>- Upgrade image is suitable for this card</li> <li>- (Note: The background color is white)</li> </ul>
	<ul style="list-style-type: none"> <li>- Web compliant</li> <li>- The card's 'Network Upgrade' setting is set to "Disabled». See HTML page Network Settings</li> <li>- The card is not ready to upgrade or can not be upgraded</li> <li>- Upgrade image is not suitable for this card</li> <li>- (Note: The background color is yellow)</li> </ul>
	<ul style="list-style-type: none"> <li>- Network communication is lost with the card</li> </ul>
	<ul style="list-style-type: none"> <li>- Not Web compliant</li> <li>- The card's UFTP setting is set to "Disabled"</li> <li>- The card is not ready for upgrade or can not be upgraded</li> <li>- Upgrade image is not suitable for this card</li> </ul>
	<ul style="list-style-type: none"> <li>- Not Web compliant</li> <li>- The card is ready for upgrade</li> <li>- Upgrade image is suitable for this card</li> </ul>